

context

■ sustainability

■ innovation



The logo features the letters 'C3A' in a large, bold, black, sans-serif font. The '3' is stylized with a thick, rounded shape. Below the logo, the text 'consult three architects' is written in a smaller, black, sans-serif font.

consult three architects

South Africa,
the Cradle of Humankind...

Multicultural
and Multilingual



Dear Clients and Prospective Clients,

Over the years, Consult Three Architects (Pty) Limited have gained considerable prestige as experts for place-making and space-making from small objects and urban spaces to large master-planning and development plans.

Consult Three Architects (Pty) Limited are solution providers for the tricky projects, inspired by and dealing with the complexity of the modern world we live in, its opportunities and challenges.

We are proud to be able to offer you a team which addresses its tasks with dedication, responsibility and the will to satisfy our clients demands with perfection. We ensure a relevant and productive scope of projects, environmental interventions and strategic approaches; always with the aim to find the best, relevant and state-of-the-art solutions.

At Consult Three Architects (Pty) Limited our commitment to quality is maintained by continuously developing knowledge and experience on urban architecture and architecture as a whole with its related subjects, such as engineering, social sciences and arts.

The diversity of our projects is nurtured by our honest interest in the culture and history of a given context, trying to discover, extract and interweave its richness with a given brief.

In that sense it was only a matter of time to become more than just fascinated in Africa. We want to offer our services to clients with ambition in sustainable building practice, public space making and green design solution. We are curious about the challenges we might meet and hope to be able to develop a long term relationship with this exciting and important part of the world.

Bandile Brian Boyana
Chief Executive Officer



001 Context

Contextual approach considering built environment, culture, traditions, landscape.....

002 Sustainability

Social aspects, low energy consumption, complete lifecycle analysis, bioclimatic approaches, low-technology concepts

003 Innovation

New ideas and approach, with expertise and proven methodologies that are integral to our advanced business strategy

Footprint in South Africa...



PRETORIA: main office
office manager: kofi kwei smith
physical address: unit 4, first floor, block b, westend office park,
9 hall street, die hoewes, centurion, pretoria, 0163
postal address: p.o. box 8234, greenstone, 1616
telephone: +27 86 002 2101
facsimile: +27 86 513 2278
email: pta-admin@consult3.co.za

DURBAN: main office
office manager: bandile brian boyana
physical address: suite 3, first floor, block 3, king fisher office
park, 28-32 siphosethu drv, mt edgecombe, 4300
postal address: p.o. box 1740, mt edgecombe, durban, 4301
telephone: +27 31 940 5258
facsimile: +27 86 540 6181
email: durban-admin@consult3.co.za

EAST LONDON: main office
office manager: allan mauricio deang
physical address: 12 athlone crescent, selborne, east london, 5201
postal address: p.o. box 13303, vincent mall, east london, 5217
telephone: +27 43 050 0992
facsimile: +27 86 513 2288
email: el-admin@consult3.co.za

CAPE TOWN: main office
office manager: chinedum fabian emeruem
physical address: 24 nomad road, sand drift east, cape town, 7441
postal address: p.o. box 2925, CBD, cape town, 8000
telephone: +27 21 555 0051
facsimile: +27 86 476 6377
email: ct-admin@consult3.co.za



BANDILE BRIAN BOYANA

Position: Chief Executive Officer
Qualifications: Master of Architecture Professional
Experience: 12 Years Post-Registration Experience
Expertise: Urban Design, Design Director, Project Management, Sustainable Architecture

Bandile Boyana is an active executive director of Consult Three Architects (Pty) Limited, in his work Bandile Boyana deals primarily with new initiatives and re-development projects from a social aspects, low energy consumption, complete lifecycle analysis and low-technology solutions, Bandile's focus on contextual approach considering built environment, culture, traditions, landscape has been his signature in deriving relevant and appropriate solutions to all his work.



KOFI KWEI SMITH

Position: Chief Operations Officer
Qualifications: Master of Architecture Professional
Experience: 12 Years Post-Registration Experience
Expertise: Urban Design, Project Management, Feasibility Studies, Packaged Deals and Risk Management

As an external moderator of Nelson Mandela University School of Architecture, Kofi Kwei Smith is a co-founder of Consult Three Architects (Pty) Limited, in his work Kofi Kwei Smith deals primarily with urban design, project management, feasibility studies and packaged deals, interface of architecture and engineering construction, with the meaning of material and memory as well as with the ecological, social and political capabilities of combined strategies for architecture and landscape in urban spaces.

Who we are...

INTELLIGENT GROWTH

THOMPSON KOFI BUARI

- Chief Financial Officer
- Chartered Certified Accountant (UK)
- Financial Management
- SAQA NQF Level 8
- 19 Years Post-Reg Experience




ALLAN MAURICIO-DEANG

- Office Manager: East London
- Professional Architect
- Professional Construction Project Manager
- 12 Years Post-Reg Experience



DAVID TAWANDA CHISVO

- Senior Project Architect: Pretoria
- Professional Architect
- Project Management
- 14 Years Post-Reg Experience



PIETER HENDERSON

- Senior Project Architect: Durban
- Professional Architect
- Project Management
- Green Design Architect
- 22 Years Post-Reg Experience



CHINEDUM FABIAN EMERUEM

- Associate: ISO 9001 Quality Manager
- Professional Architect
- Professional Construction Project Manager
- 28 Years Post-Reg Experience



DYLAN VELDMAN

- Professional Senior Arch Tech
- Building Design Suite Specialist
- Project Management
- Technical Expert
- 09 Years Post-Reg Experience



Kennedy Gapare

- Project Management
- Professional Senior Arch Tech
- Building Design Suite Specialist
- Technical Expert
- 14 Years Post-Reg Experience



ARNEL ALVAREZ CLARITO

- Project Architect: Durban
- Professional Professional Architect
- Professional Project Manager
- 11 Years Post-Reg Experience



HACTOR KABO MALETE

- Professional Architect
- Research & Green Design Architect
- Building Design Suite Specialist
- Project Architect
- 04 Years Post-Reg Experience



BOIPUSO ISAAC

- Professional Architect
- Research Architect
- Building Design Suite Specialist
- Project Architect
- 02 Years Post-Reg Experience



GRANT ALEXANDER GARDEN

- Project Management
- Professional Senior Arch Tech
- Building Design Suite Specialist
- Technical Expert
- 26 Years Post-Reg Experience



JOSCELYN BERNARD NARTEY

- Programme Manager:
- Professional Civil Engineer
- Professional Construction Project Manager
- 26 Years Post-Reg Experience



Who we are...

INTELLIGENT GROWTH

**MOERIEDA
DEANG**



- ISO 9001 Quality Manager
- Project Administration
- Project Management
- Technical Support
- 07 Years Experience

**Vumile
Dube**



- Project Administration
- Debt Collection
- Office Administration
- Office Operations
- Debt Control
- 03 Years Experience

**Telela Stella
Nqeto**



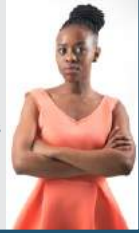
- Accounts and Debt Collection
- Project Billing Management
- Project Financial Control
- SARS Compliance Management
- 06 Years Experience

**Amos
Solomon**



- Project Management
- Professional Architectural Tech
- Building Design Suite Specialist
- Technical Expert
- 06 Years Post-Reg Experience

**Silondwe
Magubane**



- Receptionist
- Office Administration Support
- Office Operations Support
- 02 Year Experience

**Mark-Anthony
Olaviaga**



- Project Administration
- Project Management
- Technical Support
- 05 Years Experience

**Sibusiso
Khuzwayo**



- Architectural Technologist
- Building Design Suite Specialist
- Project Management
- Technical Support
- 02 Year Post-Reg Experience

**Buyile
Thutshini**



- Office Administration
- Project and Bid Administration
- Office Operations
- 04 Years Experience

**Gary
Botha**



- Information Technology Manager
- Software Management
- Technical Expert
- Hardware Management
- 16 Years Post-Reg Experience

**Sethabile
Cele**



- Receptionist
- Office Administration Support
- Office Operations Support
- 02 Year Experience

**Eunice
Ngoma**



- Office Administration
- Project and Bid Administration
- Office Operations
- 08 Years Experience


**Nqobile
Buthelezi**



- Office Administration
- Project and Bid Administration
- Project Administration
- Office Operations
- 04 Years Experience

Who we are...

INTELLIGENT GROWTH

<p>Nomcebo Mpungose</p> <ul style="list-style-type: none">ReceptionistOffice Administration SupportOffice Operations Support03 Year Experience	
---------------------------------------------------------------------------------------------------------------------------------------------------------------------------------------------	-----------------------------------------------------------------------------------

“We are not style driven...
...but context driven”

CONTEXT

SUSTAINABILITY

INNOVATION

How we work...

URBAN TRANSFORMATIONS

Since the beginning, a main concern has been a theoretically and scientifically based design in consideration of sustainable environmental technologies.

We understand avant-grade landscape and architecture as a translation of ideas of nature, ecology and society. Our approach aims at developing the strategies first, in order to be able to respond to a multitude of demands and to get sufficient flexibility in the subsequent design stages.

It derives from the given site; the actual conditions and local aesthetic frame. It takes into account the specific cultural realities and works with climate as a positive identity. Consequently, each of our projects look different and has its own distinctive characteristics which is informed by the context.

Our work ranges from interior design, 3D visualisation, product design to urban design for wide range of blue chip private clients to various governmental ministries, covering the entire field of urban design from intimate gardens to large precincts and infrastructure projects.

Our expertise also covers project management, packaged deals and development management.

The objective is to establish and confirm project development opportunities and strategies from a relevancy and regulatory standpoint and manage their implementation.

OPEN SPACES

CONTEXT - SUSTAINABILITY - INNOVATION

We believe in:

EMPATHY DRIVEN AND PURPOSE..

ARCHITECTURE

01. empathy driven and purpose oriented architectural solutions
02. a contextual rather than environmentally antagonistic approach
03. sensitive to energy and conservational issues

Merging seemingly contradictory aspects in order to always define the uniqueness of a project is one of our ambitious goals.

We look upon our architecture as being emotional yet at the same time rational. We practice concepts driven and pragmatic architecture, which is generous but economical when it comes to funds and resources.

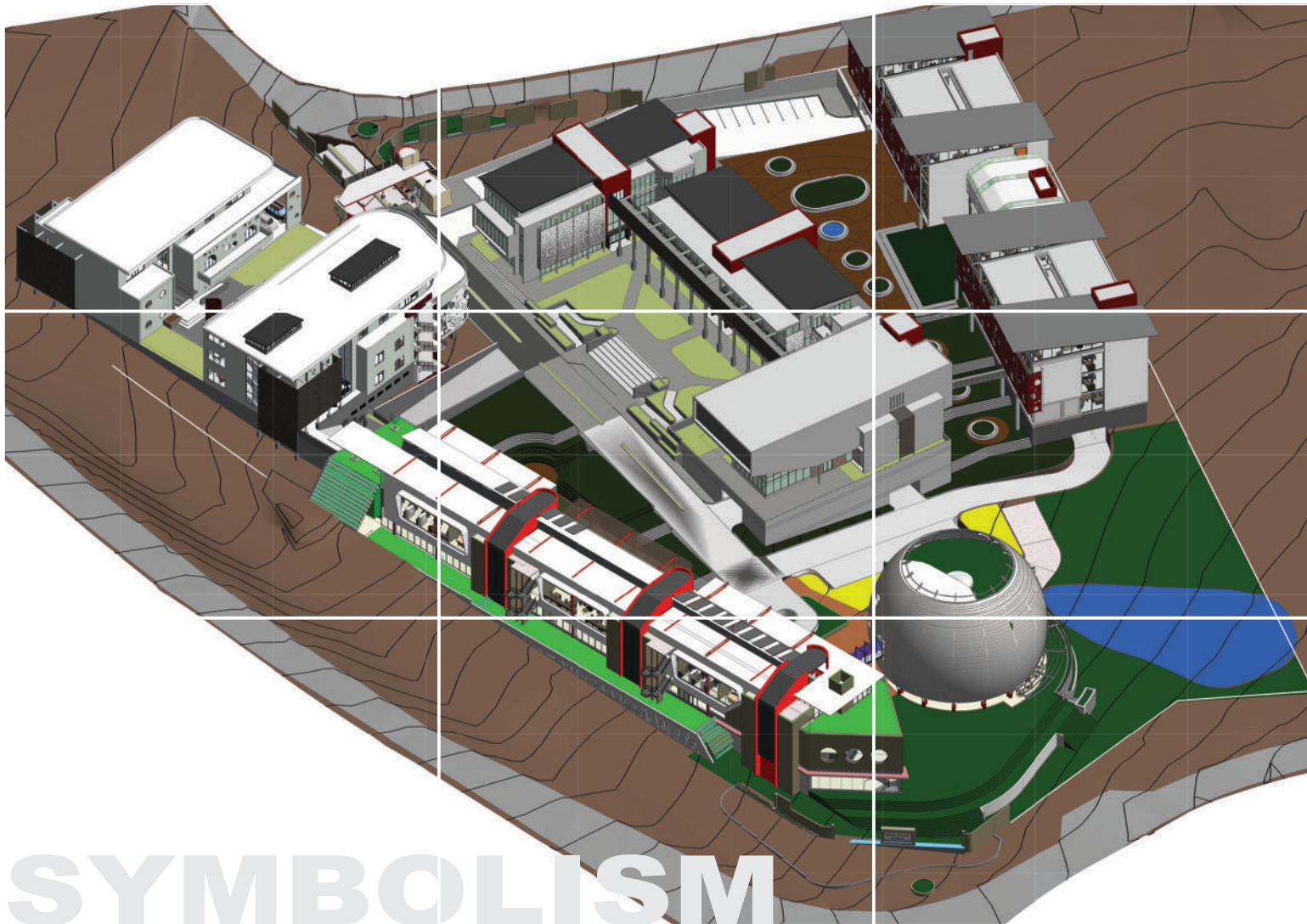
Our architecture is contextually oriented and does not seek to antagonise a project's environment. It is innovative without losing sight of traditional aspects.

We have always been and always will be attentive to ecological and environmental aspects, favouring bioclimatic techniques in lieu of sophisticated technicalities.

Making this policy work requires team spirit, a readiness for contradictory debates and analysis, a dynamic, enthusiastic and experienced staff as well as a sufficiently sized yet easily enough to manage office

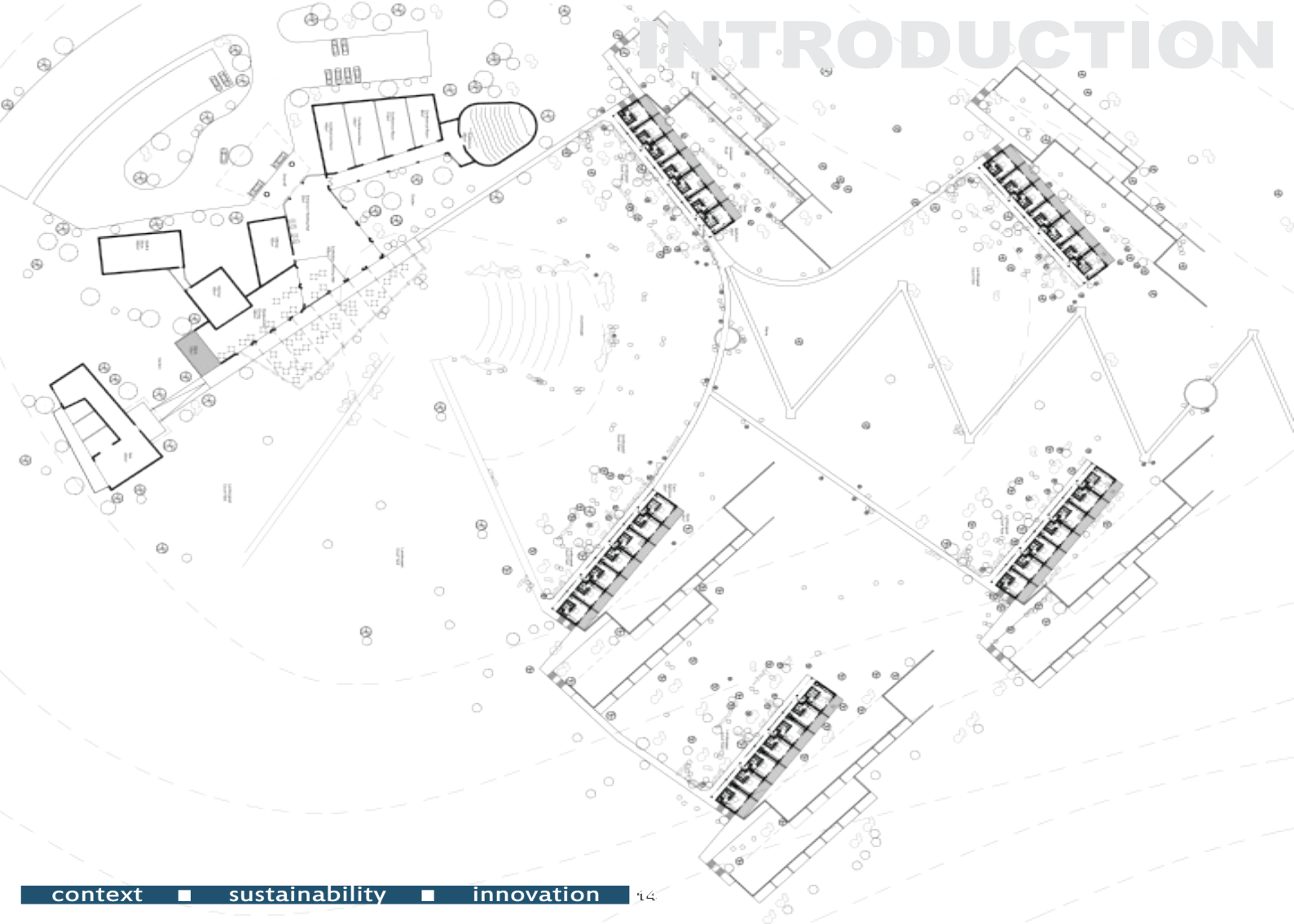
Last but not least, we perceive all buildings to be 'public buildings' and want our architecture to be of added value not only to the owner but also to the users as well as the community at large.





SYMBOLISM

INTRODUCTION



“We are not style driven...

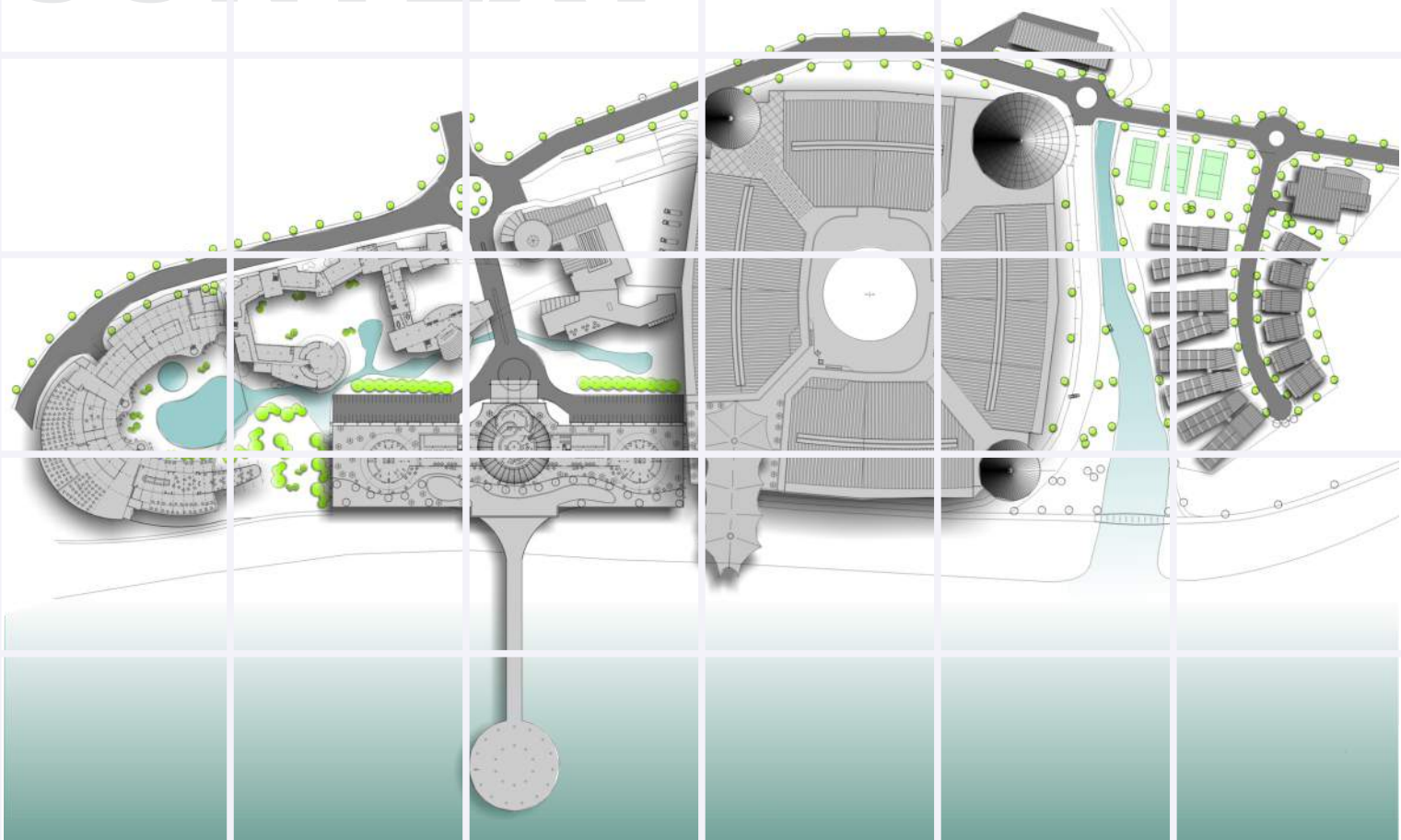
...but context driven”

our design derives from the given site, the actual conditions and the local aesthetic frame

CONTEXT



CONTEXT



Professional Services...

Urban Design

Architecture

Project Management

Programme Management

Interior Design

3D Visualisation

Seyisi Street Square [Heritage]

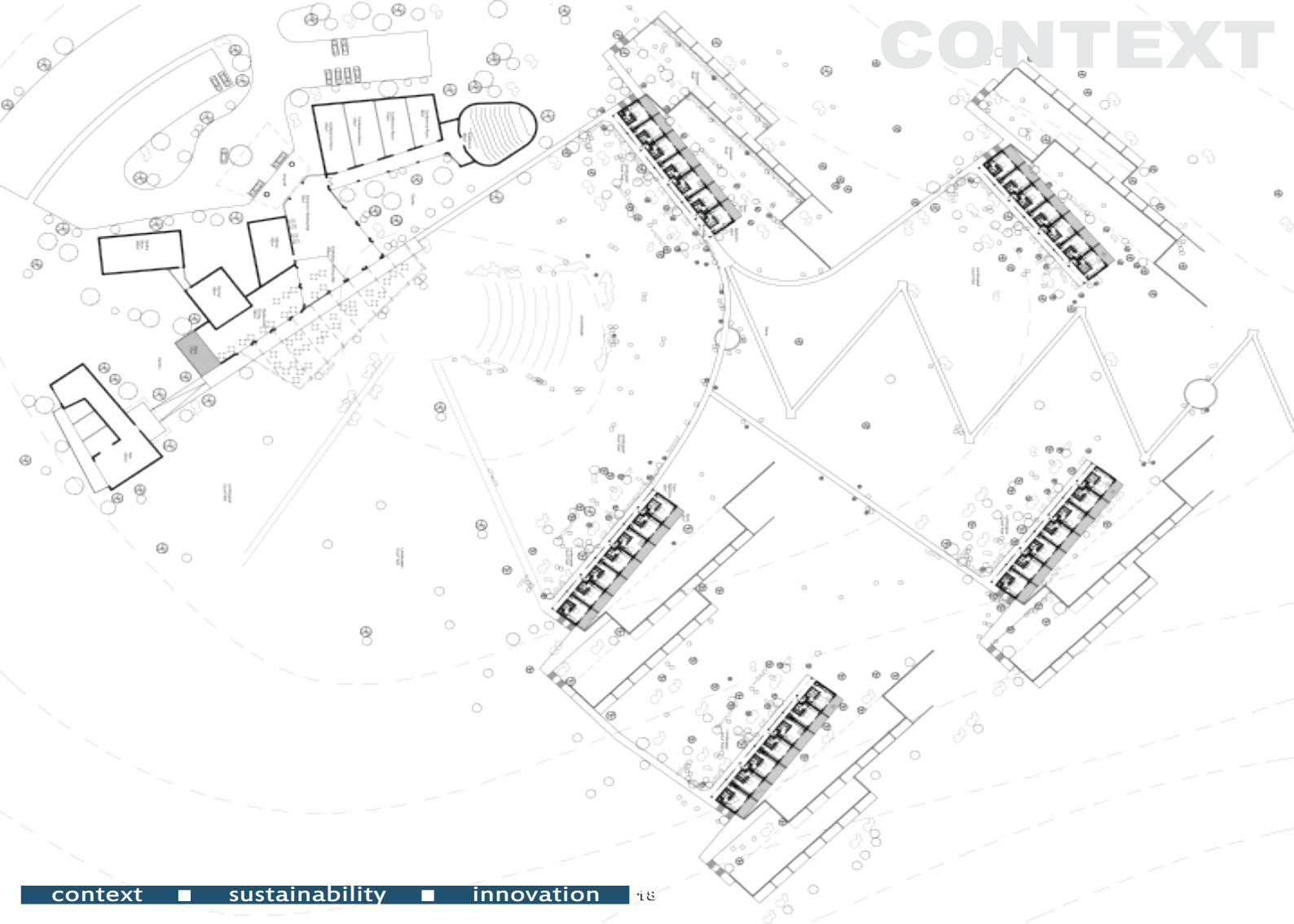
Port Elizabeth, Eastern Cape Province, South Africa

This project was the design and construction of a heritage park / square that seeks to celebrate the fallen heroes of the apartheid South Africa era. The brief made emphasis on the following important aspects which needed to be captured in the design process:

- The Celebrating our past heroes & heroines
- Struggle Monument
- Creation of Interactive public square
- Preserving Children's Play Park
- Public pick up and drop-off zone
- Hawker's Trading Facilities
- Township Greening
- Small, Micro and Medium Enterprise' support
- Craft Market and Workshop Facilities



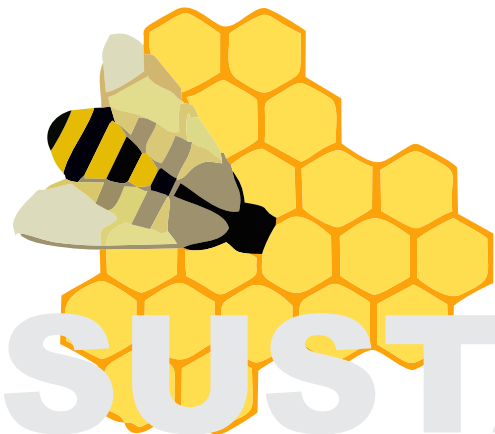
CONTEXT



“We are not style driven...

...but environmentally conscious”

Social aspects, low energy consumption, complete lifecycle analysis,
bioclimatic approaches, low-technology concepts



SUSTAINABILITY

SUSTAINABILITY



Professional Services...

Urban Design
Architecture
Project Management
Programme Management
Interior Design
3D Visualisation

Re-Development of Botha Sigcau [Offices]

Mthatha, Eastern Cape Province, South Africa

The Re-Development and conversion of a thirteen storey landmark building totalling an estimated 46,000sqm Botha Sigcau Government Office building into Open Plan Offices with emphasis on green sustainable solutions and energy efficiency approach to the design.

The brief further made emphasis on paying attention to the resolution of the Urban Design and Masterplan, Alternative Energy Efficiency Approach and the integration of the building to its Urban Context.



Professional Services...

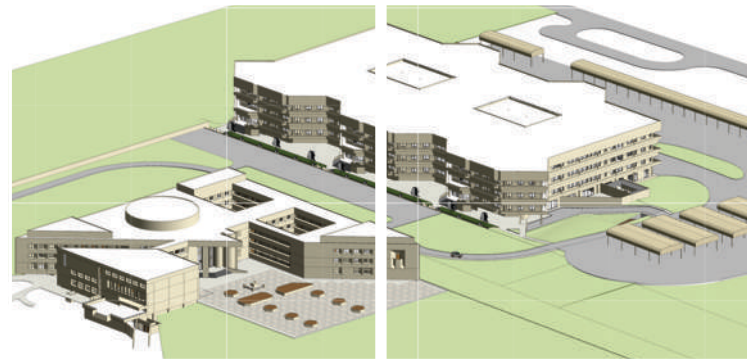
Urban Design
Architecture
Project Management
Programme Management
Interior Design
3D Visualisation

Re-Development of Legislative and Assembly Building Complex [Offices]

Ulundi, KwaZulu-Natal Province, South Africa

The Re-Development and conversion of a three storey Legislative and Assembly Buildings totalling an estimated 60,000sqm Government Office building into Open Plan Offices with emphasis on green sustainable solutions and energy efficiency approach to the design.

The brief further made emphasis on paying attention to the resolution of the Urban Design and Masterplan, Alternative Energy Efficiency Approach and the integration of the building to its Urban Context.



Professional Services...

Urban Design

Architecture

Project Management

Programme Management

Interior Design

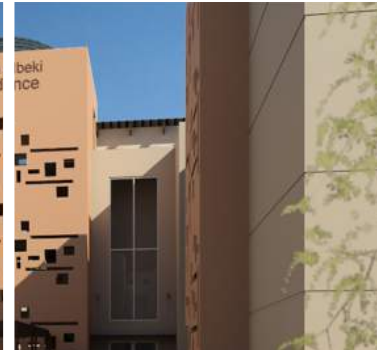
3D Visualisation

Rapid Refurbishment of Walter Sisulu University Campuses [Institutional]

Mthatha Campus, Butterworth Campus, East London Campus and Queenstown Campus, Eastern Cape Province, South Africa

This Project was to undertake a sustainable refurbishment of all Walter Sisulu University campus' in the Eastern Cape Province of South Africa.

A budget of ZAR 120 Million was allocated for the refurbishment programme of the existing infrastructure and the design and construction of new infrastructure, this included Lecture Halls, Library Blocks, Students Residence, Offices, Entrance Gates, Sporting Facilities, Pant Rooms, Dining Hall, Kitchens, Community Facilities and the Urban Regeneration of the Campuses.



Professional Services...

Urban Design
Architecture
Principal Agent
Programme Management
Interior Design
3D Visualisation

Customisation, Re-Design and Configuration of BW1 and BW2 Buildings [Industrial]

East London, Eastern Cape Province, South Africa

This Project constituted the Customisation, Re-Design, Configuration and Addition to a 7 800sqm BW1 and BW2 Buildings commissioned by the East London Industrial Development Zone.

A new tenant was to take occupation within 6 months which left the technical team to pull all stops to ensure the required stringent time frames are met.

It was successfully completed in November 2014 due to the extensive experience of key staff allocated to this project.



Professional Services...

- Urban Design
- Architecture**
- Project Management
- Programme Management
- Interior Design
- 3D Visualisation

Extension and Additions to Coega Dairy and Cheese Factory [Industrial]

Port Elizabeth, Eastern Cape Province, South Africa

This Project constitutes the extension of the existing cheese production lines, New Office Block and new packaging and assembly line within the Coega Industrial Development Zone commissioned by the Coega Industrial Development Corporation.



SUSTAINABILITY

Professional Services...

Urban Design

Architecture

Project Management

Programme Management

Interior Design

3D Visualisation

Department of Basic Education School Building Programme [Educational]

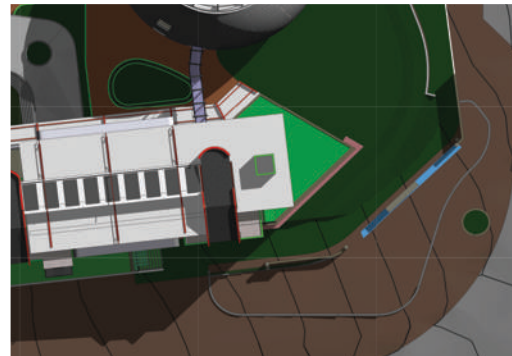
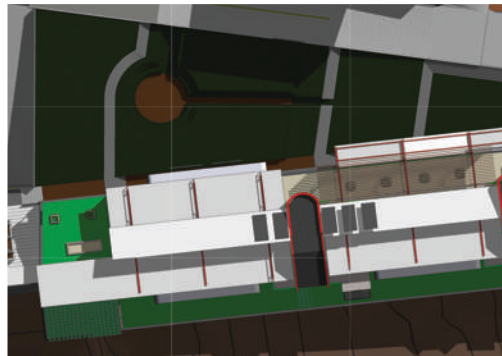
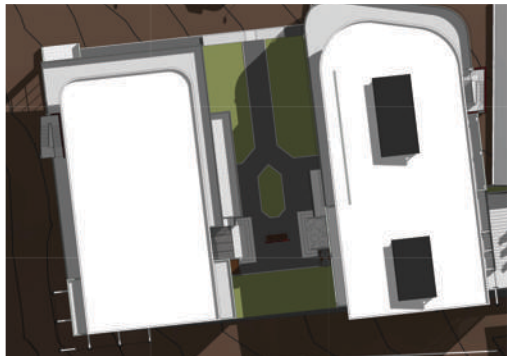
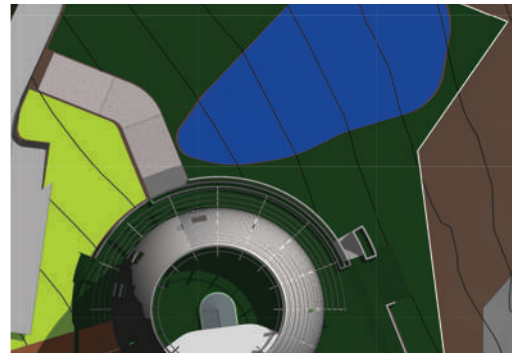
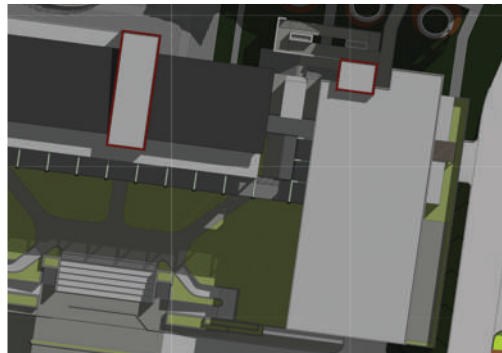
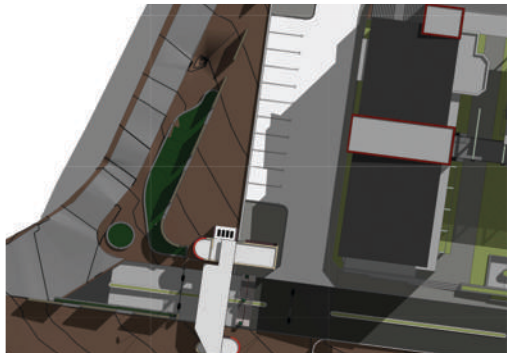
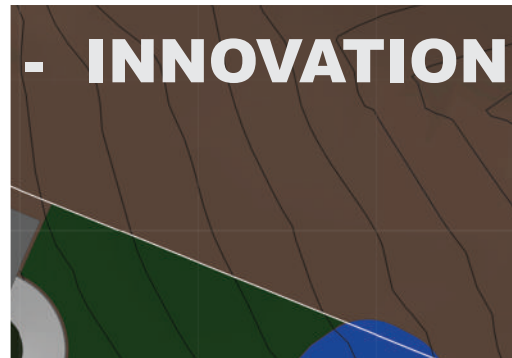
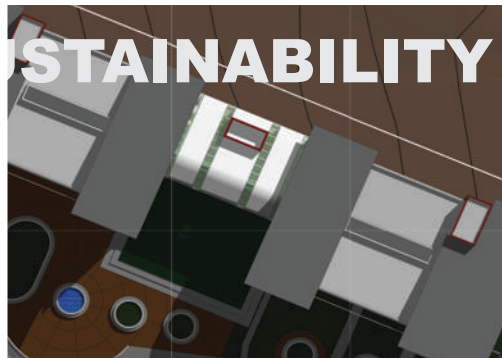
Eastern Cape Province and Kwa-Zulu Natal Province, South Africa

This Programme is based on rapid delivery of School Building Programme throughout the Province of Eastern Cape and Kwa-Zulu Natal, Executed by various implementing agents such as Development Bank of Southern Africa, Coega Development Corporation, Department of Roads and Public Works and Independent Development Trust.

The focus is on designing functional and sustainable schooling facilities with minimal maintenance attention whiles complying to local materials, response to environmental forces and job creation within the relevant local communities during the construction process.



CONTEXT - SUSTAINABILITY - INNOVATION



Professional Services...

Urban Design

Architecture

Project Management

Programme Management

Interior Design

3D Visualisation

Wellness Centre Durban Station, Springfield Store and Durban Perway [Commercial]

Durban, KwaZulu-Natal Province, South Africa

This Commission was for the refurbishment of commercial properties within the Durban Station for the Passenger Rails Agency of South Africa (PRASA).

The emphasis was on the customisation, redesign and configuration for new tenants and also the integration to existing precinct.



SUSTAINABILITY

context

■ sustainability

■ innovation

28

Professional Services...

Urban Design

Architecture

Project Management

Programme Management

Interior Design

3D Visualisation

Cofimvaba Health Club [Health Care]

Cofimvaba, Eastern Cape Province, South Africa

The design of a new Health Club with Restaurant Facilities which is to be utilised by the local government officials.

The brief included a gymnasium, indoor swimming pool, restaurant, outdoor tennis court, squash court and a health spa.



Professional Services...

Urban Design

Architecture

Project Management

Programme Management

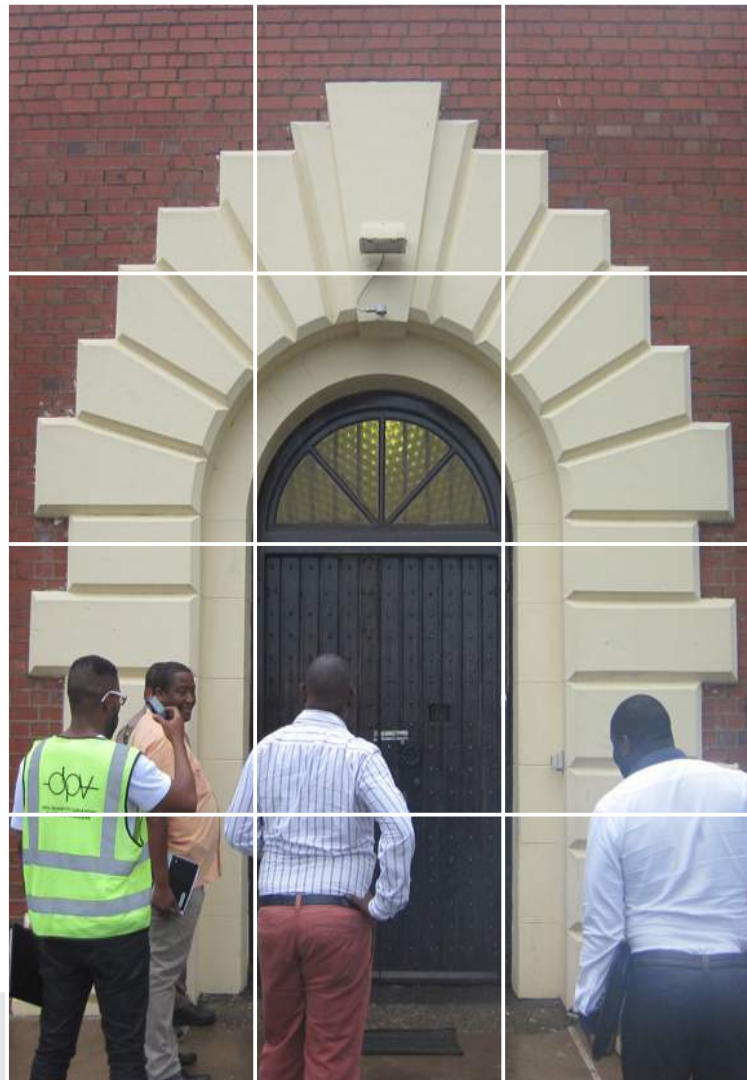
Interior Design

3D Visualisation

Upgrade of KZN Correctional Services Facilities [Correctional Facilities]

Various Districts, KwaZulu-Natal Province, South Africa

These projects were commissioned by the Kwa-Zulu Natal Independent Development Trust for the upgrade of Correctional Services Kitchen Complexes and the rehabilitation of services within all correctional facilities throughout the province.



Professional Services...

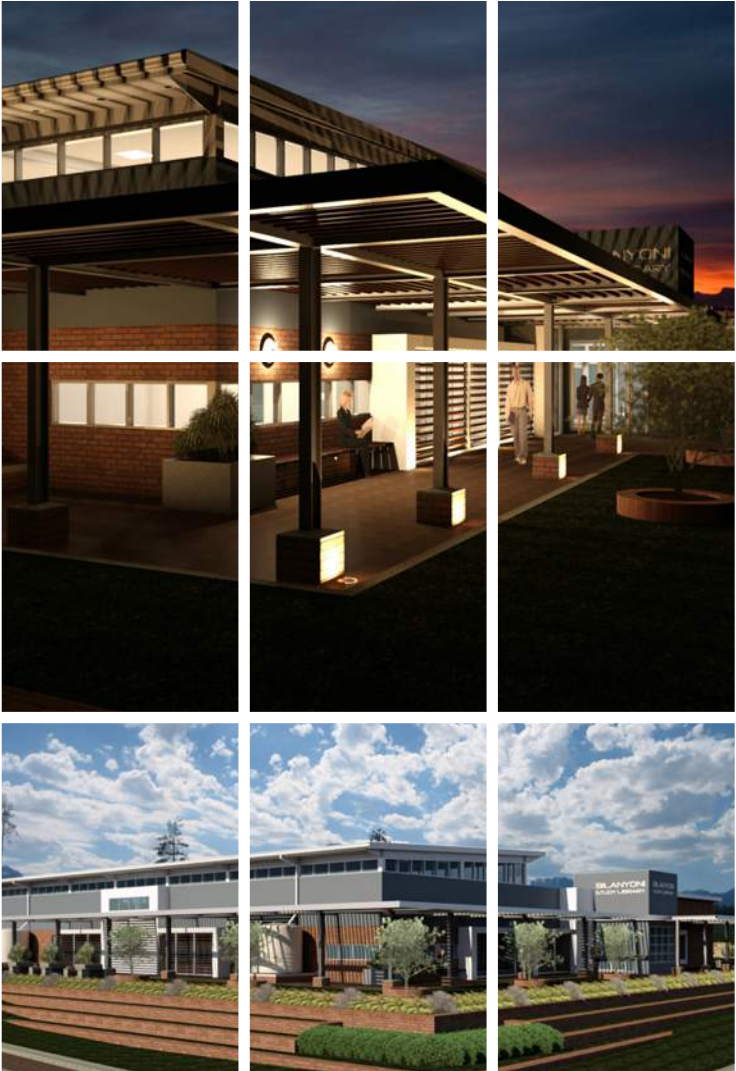
- Urban Design
- Architecture
- Project Management
- Programme Management
- Interior Design
- 3D Visualisation

New Bilanyoni Library [Educational]

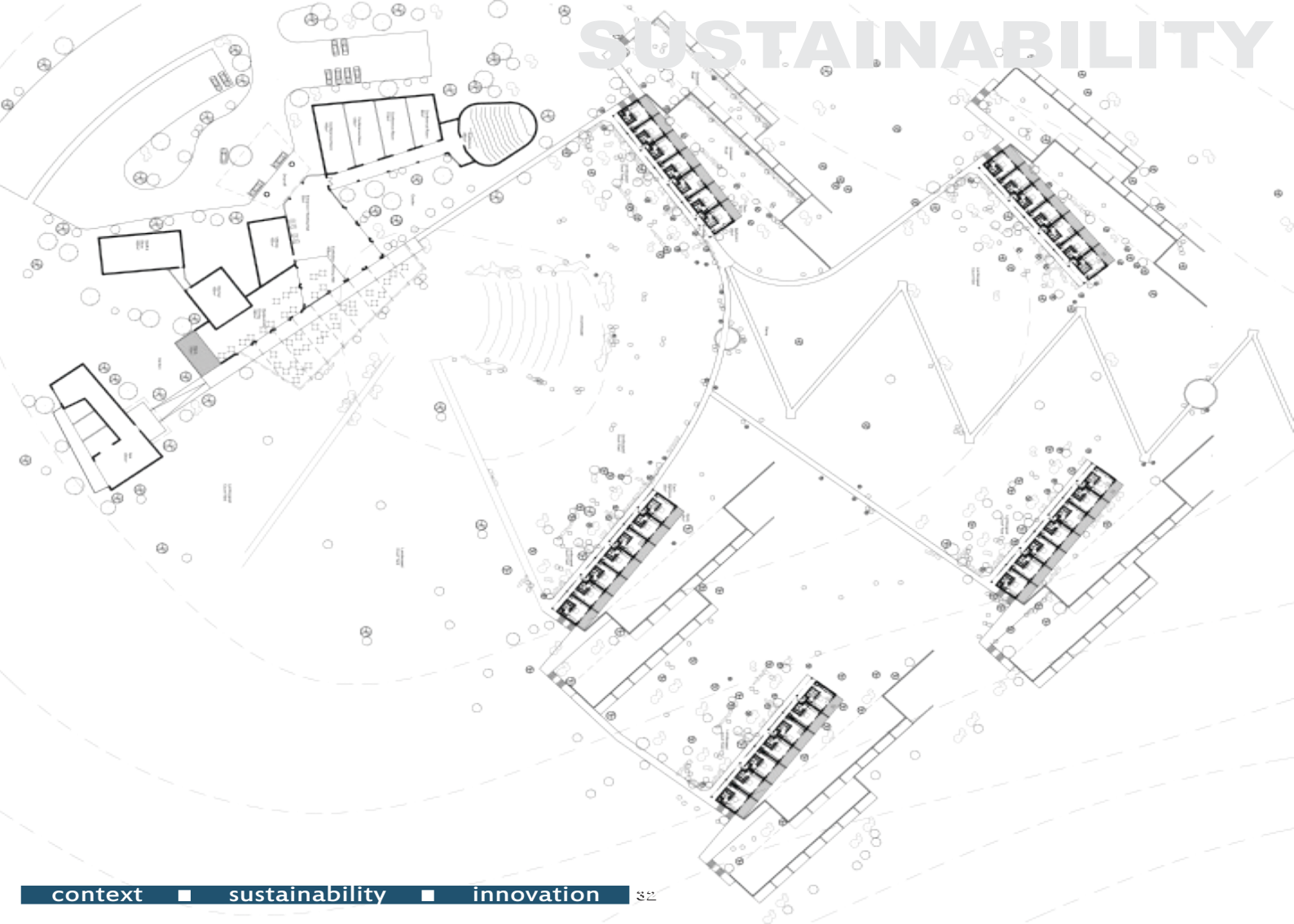
Paulpietersburg, KwaZulu-Natal Province, South Africa

Bilanyoni Library was commissioned by the Kwa-Zulu Natal Department of Arts and Culture as a roll-out programme to build multiple libraries throughout the province.

The brief includes state-of-the-art facilities and multimedia component that will equip community users to enable modern trend learning.



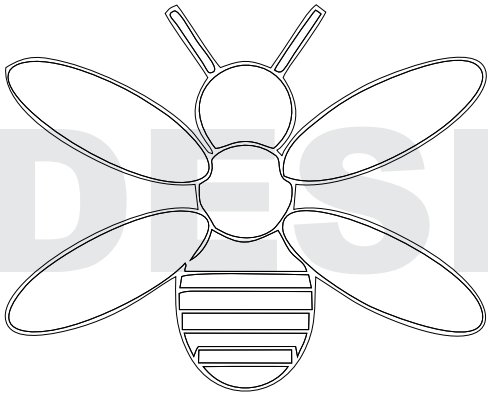
SUSTAINABILITY



“We are not style driven...

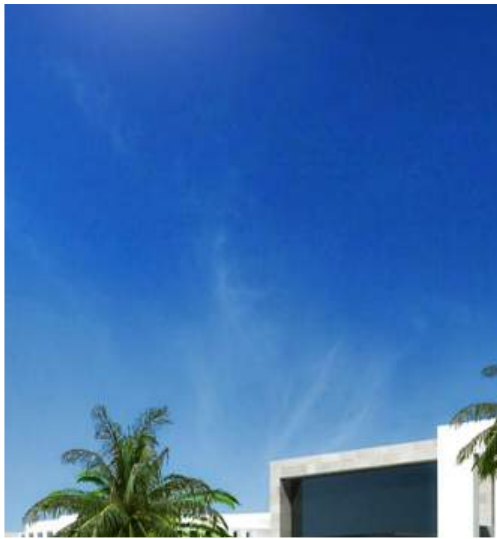
...but inspired by vernacular architecture”

From a contemporary, classic design code to a
design inspired by vernacular architecture



DESIGN CODE

DESIGN CODE



Professional Services...

Urban Design
Architecture
Project Management
Programme Management
Interior Design
3D Visualisation

KSD TVET College Administration Hub [Institutional]

Mthatha, Eastern Cape Province, South Africa

The Development of New Administration Precinct to be constructed Off-Campus

This includes Council Chambers, Cafeteria, Offices, Conferencing Facilities, Research Facilities, Fleet Facilities and Lecture Halls, the emphasis was for the design team to consider a green sustainable solutions and alternative technology which will be used as a flagship project in promoting green architecture within the Eastern Cape Province.



Professional Services...

Urban Design

Architecture

Project Management

Programme Management

Interior Design

3D Visualisation

Westville Campus and Offices for Training Academy [Institutional]

Durban, KwaZulu-Natal Province, South Africa

The Development of The Kwa-Zulu Natal Premiers Office with associated Facilities such as Training Academy for government officials, Hotel Facilities and Restaurant / Kitchen Complex.

The brief is to design a high-tech complex which complies with modern day building technology systems to ensure efficiency of the functioning of the building, emphasis was to be given to alternative Energy Efficiency solutions and the integration of the building to its Urban Context.



DESIGN CODE

context



sustainability



innovation



Professional Services...

Urban Design

Architecture

Project Management

Programme Management

Interior Design

3D Visualisation

Elliotdale Cluster Offices [Offices]

Elliotdale, Eastern Cape Province, South Africa

The brief was to design a multi-storey and multi-functional building that will serve as a centralised offices for various government departments.

Further to the brief was to incorporate building technology systems to ensure efficiency of the functioning of the building, emphasis was to be given to alternative Energy Efficiency solutions.

DESIGN



Professional Services...

Urban Design

Architecture

Project Management

Programme Management

Interior Design

3D Visualisation

State Drug Treatment Centre [Institutional]

Port Elizabeth, Eastern Cape Province, South Africa

The State Drug Treatment Centre's brief was to convert an existing school in Port Elizabeth into a drug rehabilitation centre as a pilot project for the eastern cape province by the department of social development.

This brief included consideration and understanding of the nature of the drug addicts which will have an impact on the design, building technology systems to ensure efficiency of the functioning of the building with security being in the centre stage of the design process.



Professional Services...

Urban Design

Architecture

Project Management

Programme Management

Interior Design

3D Visualisation

House Foli [Residential]

Port Elizabeth, Eastern Cape Province, South Africa

New design of Beach Residence for the Foli Family with emphasis on 180 degrees sea view, construction technology, sustainability, entertainment and green building solutions.

The brief is to design a high-tech house and to break away from the conventional approach to building houses in Africa and to ensure efficiency within the functioning of the house, emphasis was to be given to alternative Energy Efficiency solutions and the integration and interfacing of private realms and public realms.



Professional Services...

Urban Design

Architecture

Project Management

Programme Management

Interior Design

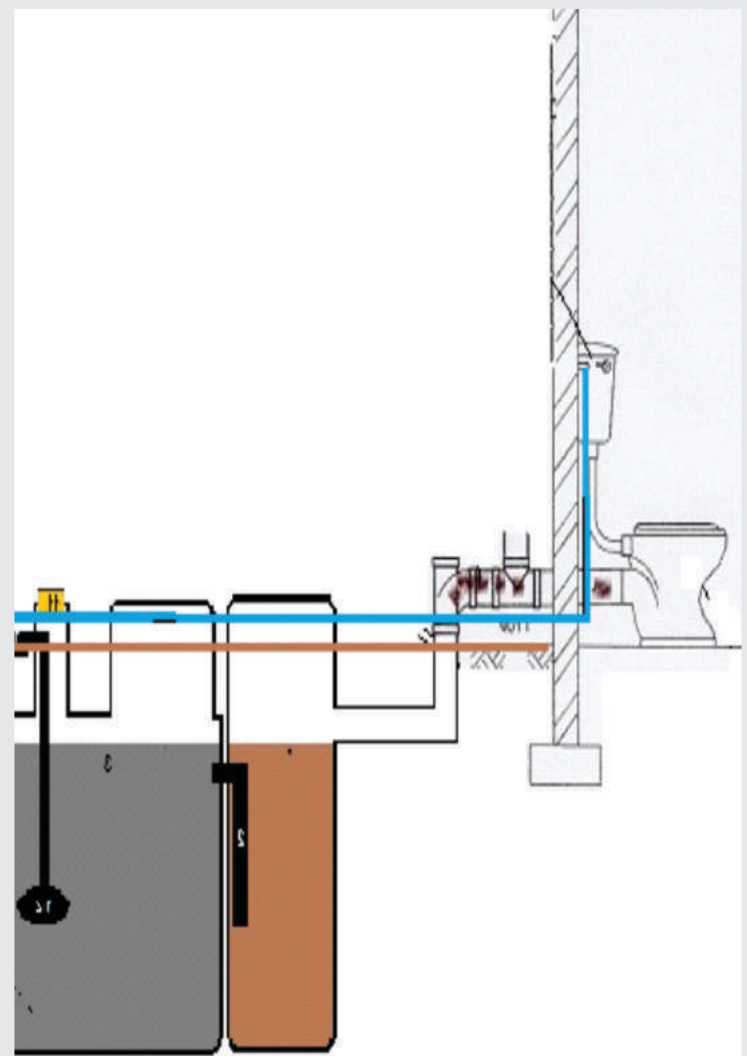
3D Visualisation

Sanitation Programme [Educational]

North Coast Region, KwaZulu-Natal Province,
South Africa

Programme Management Services for Sanitation Programme in
KwaZulu-Natal Province.

Status Quo Assessment of existing school facilities and provision
of new green solution, implementation of 200 schools
throughout the North Coast Region, construction technology,
sustainable approach and green building solutions.



Professional Services...

Urban Design

Architecture

Project Management

Programme Management

Interior Design

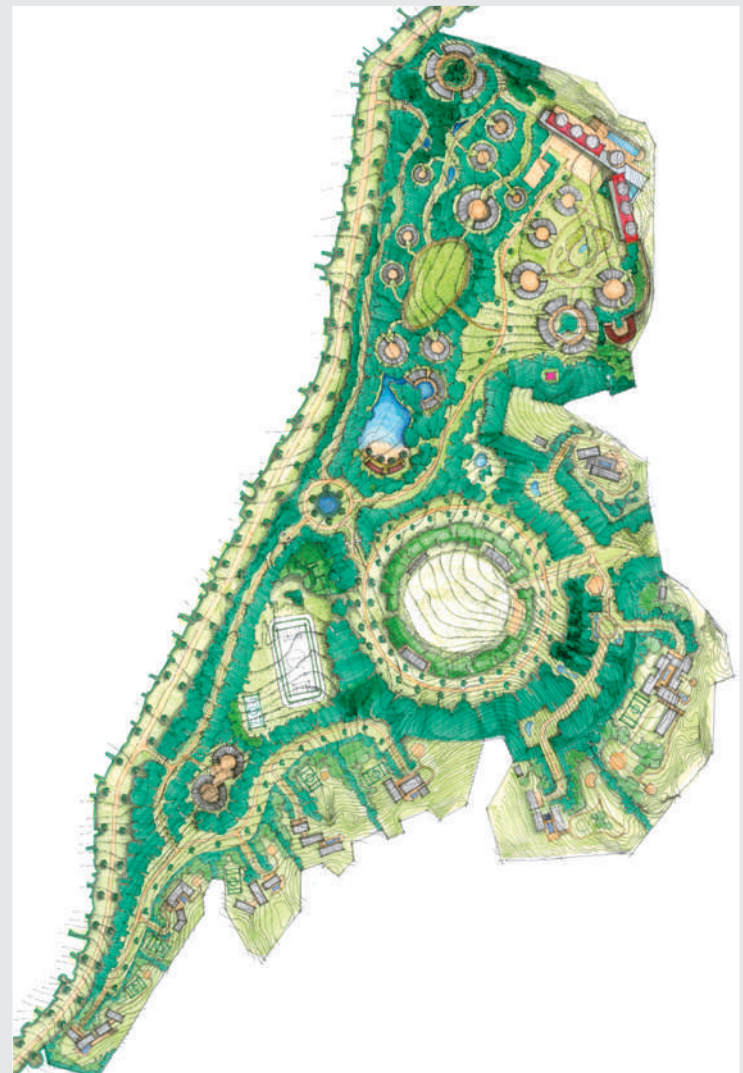
3D Visualisation

Mlonzi Estate [Residential and Leisure]

Lusikisiki, Eastern Cape Province, South Africa

Development of High End exclusive coastal Residential Estates with emphasis on 180 degrees sea view on the southern boundary and 180 degrees waterfall and cliff on the northern boundary, construction technology, sustainability, entertainment and green building solutions.

The brief is to design a high-end high-tech small holdings supported by hotel and entertainment with all its supporting facilities, the brief is to break away from conventional building technologies and to ensure efficiency within the functioning of the estate, emphasis was to be given to alternative Energy Efficiency solutions and the integration and interfacing between the various spacial realms.



Professional Services...

Urban Design
Architecture
Project Management
Programme Management
Interior Design
3D Visualisation

PRASA: Bus Terminal, Warehouse and Masabalala Yengwa Upgrade at Durban Station in KZN as part of Phase One of the Durban Station Masterplan Pipeline of Projects [Commercial]

Durban, KwaZulu-Natal Province, South Africa

A Commission for the re-development of commercial properties within the Durban Station for the Passenger Rails Agency of South Africa.

Emphasis placed on the customisation, redesign and configuration to reintegration to existing tenants and pedestrian flow within the precinct.



SUSTAINABILITY

Professional Services...

Urban Design

Architecture

Project Management

Programme Management

Interior Design

3D Visualisation

King Williams Town Golf Course Integrated Housing Development [Residential]

King Williams Town, Eastern Cape Province, South Africa

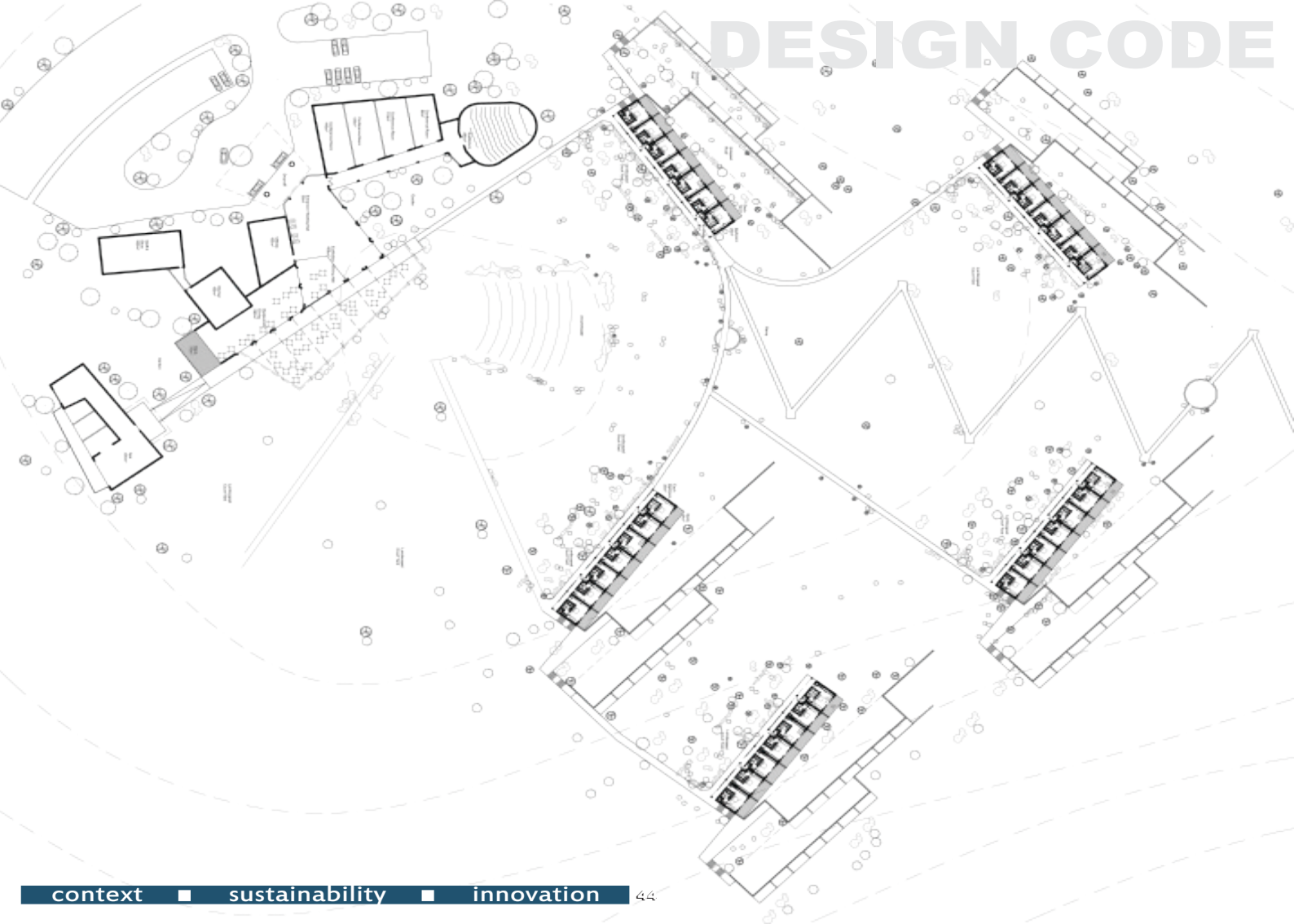
Project Management and Architectural Services for the development of an integrated housing precinct that directly talks to the need of affordable housing by the South African government in line with their housing delivery challenges.

King Williams Town Golf Course consists of the development of an integrated housing precinct on a total of 22ha parcels of land located within the Buffalo City Metropolitan region of the Eastern Cape for the provision of approximately 1000 affordable housing units.



SUSTAINABILITY

DESIGN CODE



context



sustainability

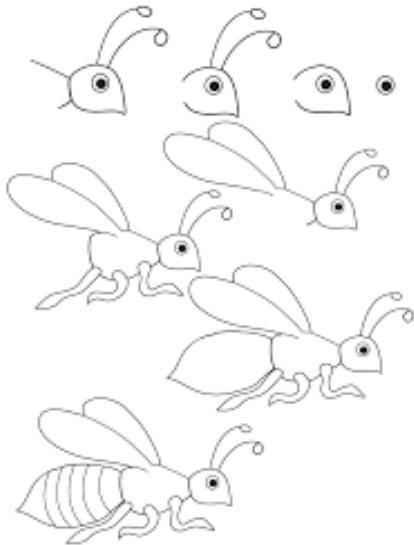


innovation

“We are not profit driven...

...but driven by empowerment”

“We perform work with highly skilled built environment expertise on major projects.....”



SOCIAL

INVESTMENTS

**SOCIAL
INVESTMENTS**

People



Educate

→ Train

→ Empower



Reward



Social Investments...

“Key focus areas: training and technology education”

SPACE

Employment Equity

The experts and associates within Consult Three Architects (Pty) Limited structures are appointed only to meaningful positions that are necessary and make a meaningful contribution to the business objectives.

The people appointed to the positions have competencies or potential necessary to perform the job at a very high level. A bonus and benefit scheme has been developed to accelerate staff participation in ownership to reflect our representative staff complement.

Skills and Human Resources

Consult Three Architects (Pty) Limited is recognized as the employer of choice with reference to its fields of specialist services. We have adapted to an exciting strategic empowerment system, which will enhance our future growth prospects.

Employment opportunities are considered strongly on merit while providing opportunities for individuals from the disadvantaged communities in South Africa. Consult Three Architects (Pty) Limited supports and promotes Empowerment as effectively as possible.

INTUITION

FORMS

Social Investments...

"We perform work with highly skilled built environment expertise on major projects"

EXPERTISE

Individual experts and associates are encouraged to take responsibility for their own development, with the Company providing appropriate resources and support for experts and associates with the need and potential for development, where such development is mutually beneficial to both the Company and individual.

Experts and associates are trained and developed to perform their current jobs effectively before being considered for advancement.

Consult Three Architects (Pty) Limited have developed a systematic approach aimed at constantly improving technical and managerial competence in line with CPD requirements. This initiative has created a pool of highly skilled Architects, Architectural technologists and Project Management experts within the company.

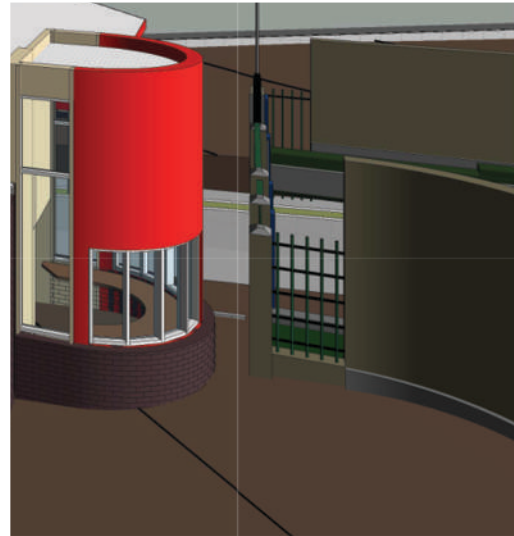
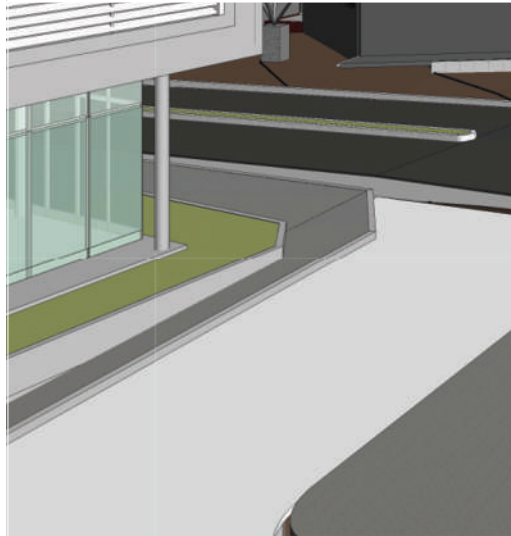
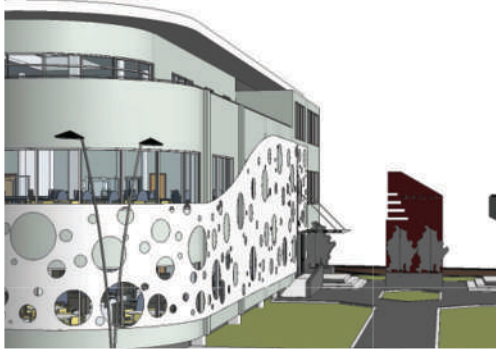
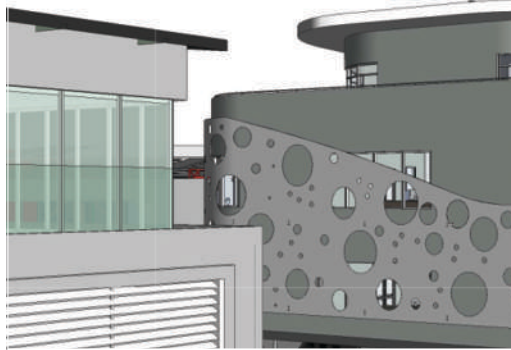
Joint consultation between management and staff has led to continuous cost reduction and improved quality, delivery, safety and morale.

Consult Three Architects (Pty) Limited also supports training and skill development to relevant communities and individuals that our respective projects are constructed. We believe in empowering our local communities by training them to construct their own community buildings whiles Consult Three Architects (Pty) Limited ensures the relevant applicants receives certificates after construction.

SYSTEMATIC APPROACH

SOCIAL INVESTMENTS

SOCIAL INVESTMENTS



COMPANY PROFILE

twenty eighteen